

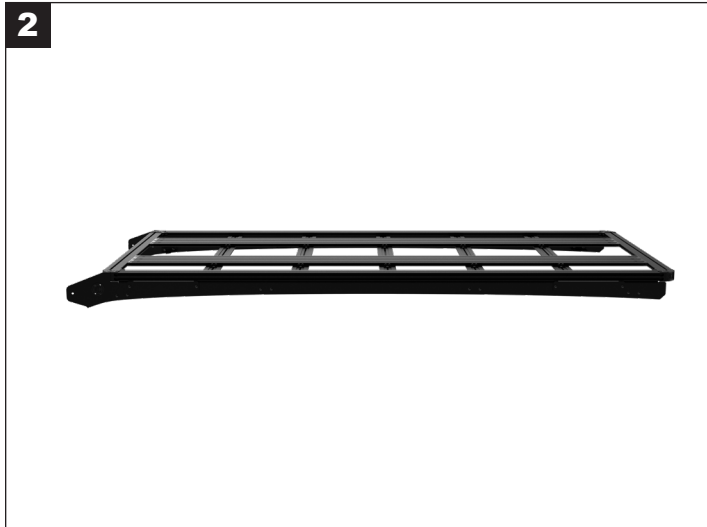
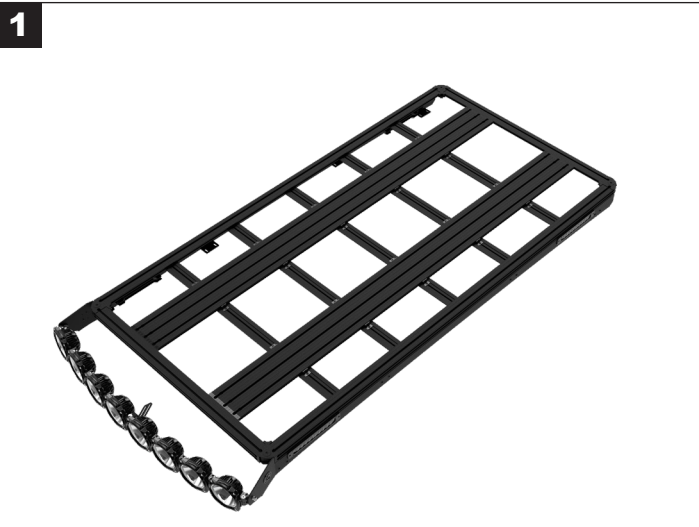


## INSTALLATION INSTRUCTIONS

**IMPORTANT:** Please read all instructions before beginning installation. These guidelines are provided in good faith to help prevent any issues arising from errors during installation. The manufacturer of this product shall not be held responsible for any user actions taken or not taken during installation. There are many details of the installation that are assumed to be general mechanical knowledge to experienced installers; which are not detailed in these instructions. These installation guidelines are intended to serve as professional recommendations and are not as a step-by-step, fail-safe installation checklist. Selection of an experienced installer is the sole responsibility of the project owner.



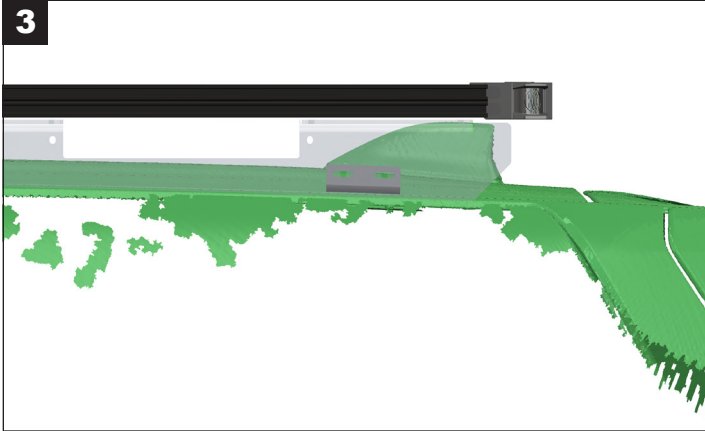
**TOOLS NEEDED: 10MM RATCHETING WRENCH, METRIC SOCKET SET, METRIC ALLEN KEY SET, AIR SHIM (OPTIONAL)**



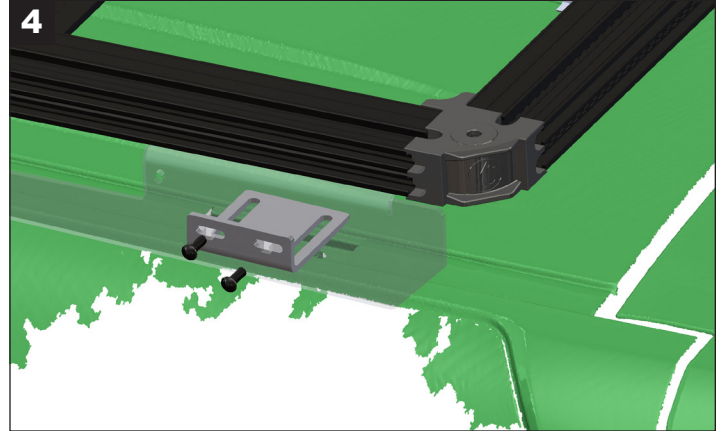
THIS INSTRUCTION MANUAL WILL SERVE AS A GENERAL GUIDE ON HOW TO SECURE YOUR ASSEMBLED PL1 ROOFRACK TO A VEHICLE. PLEASE REFER TO YOUR VEHICLE'S SPECIFIC INSTALLATION VIDEO TO GO INTO MORE DETAIL..

ENSURE THAT YOUR ROOFRACK HAS BEEN PROPERLY ASSEMBLED, AND THE VEHICLE HAS BEEN PREPPED IN ORDER TO ACCOMMODATE THE ASSOCIATED MOUNTING BRACKETS.YOUR VEHICLE SHOULD BE AT THE POINT WHERE THE ALUMINUM SPACERS HAVE BEEN INSTALLED INTO A DRIP RAIL.

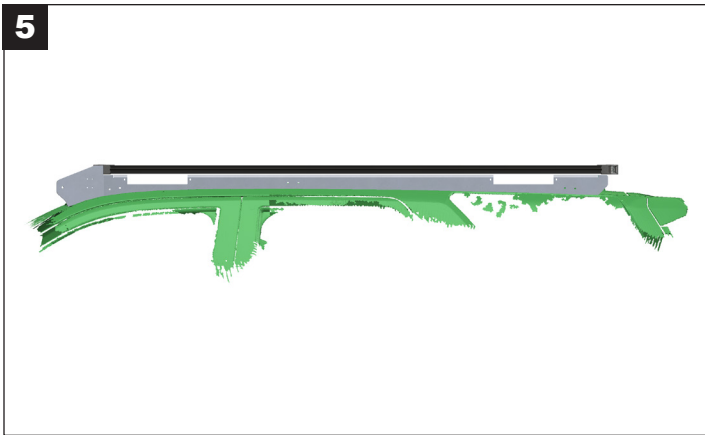
# INSTALLATION INSTRUCTIONS



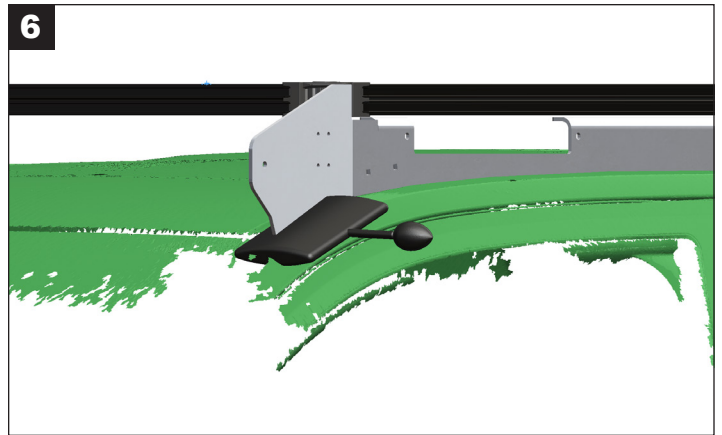
**3** WITH THE L BRACKETS IN PLACE FOR YOUR SPECIFIC APPLICATION, AND THE ROOF RACK LOOSELY PLACED INTO POSITION ATOP OF THE ROOF, GO AHEAD AND LINE UP THE SQUARE HOLES WITH THE SQUARE HOLES ON THE SIDE RAIL.



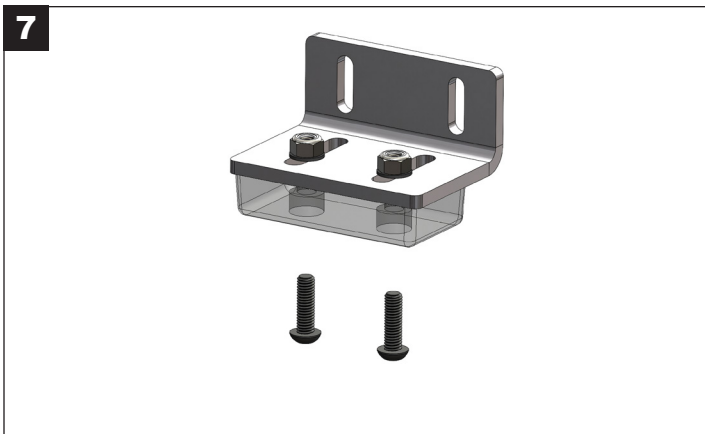
**4** INSERT AN M6 CARRIAGE BOLT THROUGH THE HOLES. YOU MIGHT NEED TO PROP UP THE ROOF RACK IN ORDER TO ALIGN THE BOLTS. REPEAT ON ALL REMAINING L-BRACKET HARDWARE OPENINGS. PLACE M6 WASHERS AND NYLOC'S OVER THE BACKSIDE TO HOLD THE CARRIAGE BOLT IN PLACE.



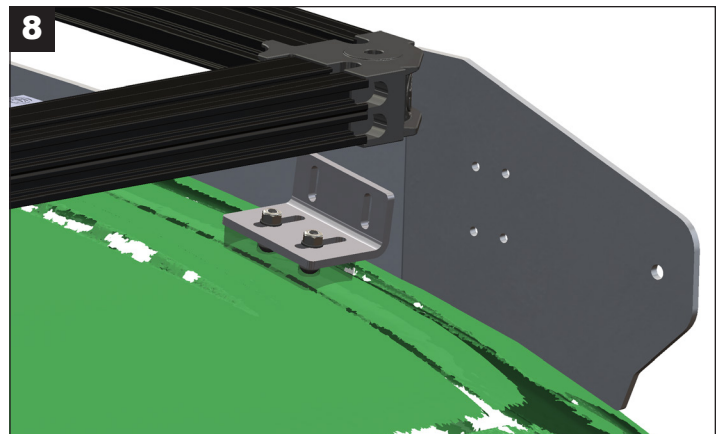
**5** WITH ALL THE HARDWARE LOOSELY ASSEMBLED, WORK YOUR WAY AROUND THE RACK. THERE IS A SLIGHT BIT OF ADJUSTABILITY BUILT INTO THE MOUNTING HARDWARE. ENSURE YOU ARE HAPPY WITH THE FIT AND TIGHTEN ALL REMAINING HARDWARE.



**6** IF YOUR VEHICLE APPLICATION ACCEPTS A RUBBER BUMPSTOP, PLEASE FOLLOW STEPS THROUGH 6-8. WITH THE RACK BOLTED INTO PLACE, YOU CAN TAKE AN AIR SHIM TO APPLY UPWARD PRESSURE TO THE FRONT OF THE SIDE RAIL. THIS WILL ASSIST IN PRELOADING THE FRONT BUMPSTOP.



**7** PRE ASSEMBLE THE BUMPSTOP ASSEMBLY AS REPRESENTED ABOVE. LOOSELY TIGHTEN HARDWARE THEN HOLD THE BUMPSTOP IN ITS RESTING POSITION. YOU WILL NEED TO ALIGN THE BUMPSTOP SO THAT IT IDEALLY SEATS ITSELF WITHIN YOUR DRIP RAIL.



**8** ONCE THE BUMPSTOP HAS BEEN ALIGNED, TIGHTEN ALL BUMPSTOP HARDWARE. BOLT THE BUMPSTOP INTO PLACE WITH THE PROVIDED M6 CARRIAGE BOLTS. WITH THE BUMPSTOPS BOLTED DOWN INTO PLACE, YOU CAN REMOVE THE AIR SHIM. ENSURE ALL HARDWARE IS TIGHTENED.