

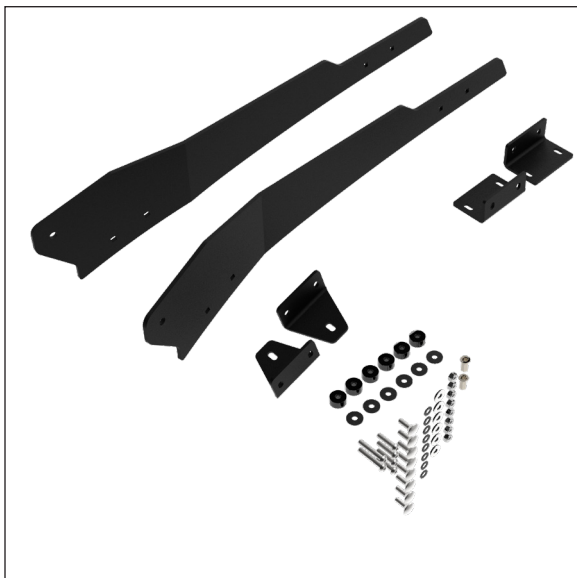


**ADVENTURE
FURTHER®**

**8 LIGHT GRAVITY OVERHEAD MOUNT
24+ TOYOTA TACOMA (4TH GEN)
7383 | 59-00245IM**

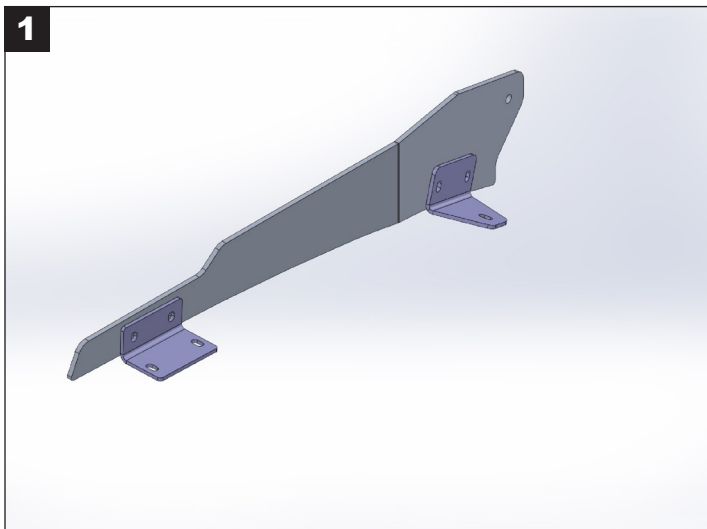
INSTALLATION INSTRUCTIONS

IMPORTANT: Please read all instructions before beginning installation. These guidelines are provided in good faith to help prevent any issues arising from errors during installation. The manufacturer of this product shall not be held responsible for any user actions taken or not taken during installation. There are many details of the installation that are assumed to be general mechanical knowledge to experienced installers; which are not detailed in these instructions. These installation guidelines are intended to serve as professional recommendations and are not as a step-by-step, fail-safe installation checklist. Selection of an experienced installer is the sole responsibility of the project owner.



TOOLS NEEDED: DRILL, PILOT DRILL BIT, "Q" DRILL BIT (.332" OR 21/64"), SELF CENTERING PUNCH, RTV OR SILICONE SEALANT EQUIVALENT, SOCKET SET, ALLEN KEY SET, MARKER, RIVNUT TOOL.

DISCLAIMER: THIS PRODUCT REQUIRES DRILLING. PLEASE PAY CAREFUL ATTENTION OR CONSULT A QUALIFIED OUTFITTER



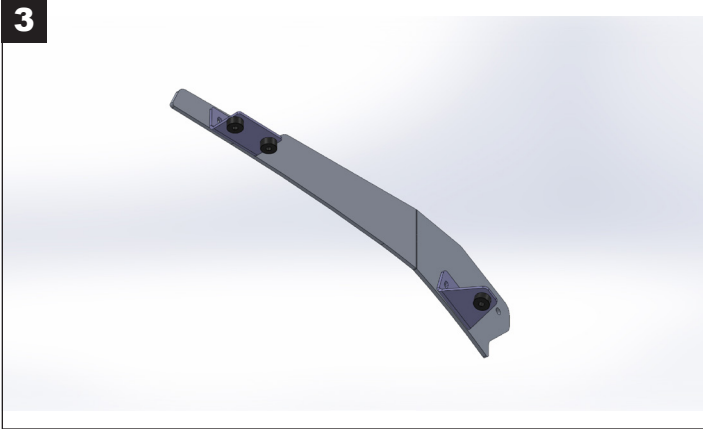
START BY PREASSEMBLING THE SIDE PLATE WITH THE PROVIDED L BRACKETS AND HARDWARE. HAND TIGHTEN HARDWARE. THERE IS A SLIGHT ADJUSTMENT BUILT INTO THE BRACKET.



YOU WILL NEED TO EXPOSE THE TWO MOST FORWARD FACTORY ROOF MOUNT HOLES. YOU WILL NEED TO SCRAPE BACK THE TAPE ON THE ROOF RAIL SURFACE TO EXPOSE THE THREADED MOUNTS. (PASSENGER SIDE AS SHOWN)

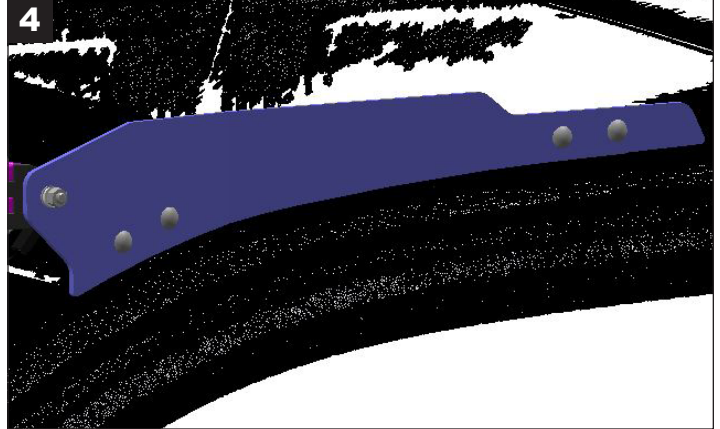
INSTALLATION INSTRUCTIONS

3



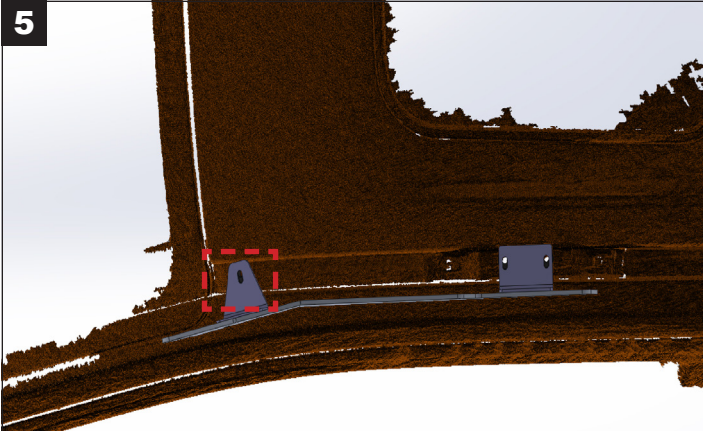
TAKE THE PROVIDED SPACERS AND PLACE THE SPACER OVER THE EXPOSED PLASTIC TUBE. THIS STEP IS FOR A DRY FIT ONLY. FOR FINAL INSTALL THESE WILL REQUIRE SEALANT ON THE UNDERSIDE OF THE SPACER.

4



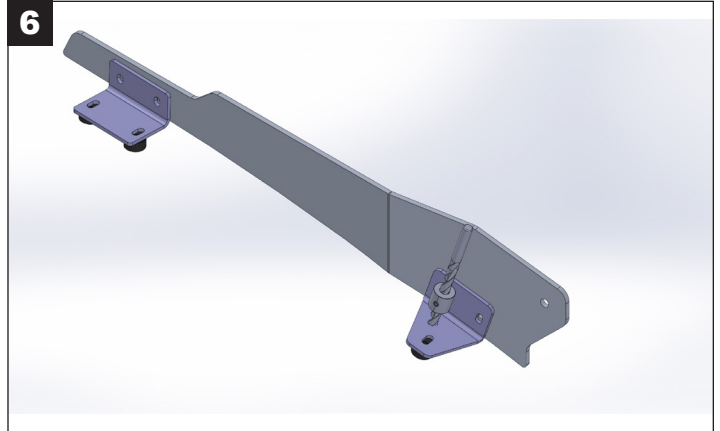
GRAB THE DRIVERS SIDE PLATE WITH THE HARDWARE AND BRACKETS PRE INSTALLED AND PLACE ON TOP OF THE SPACERS. HAND TIGHTEN THE BOLTS.

5



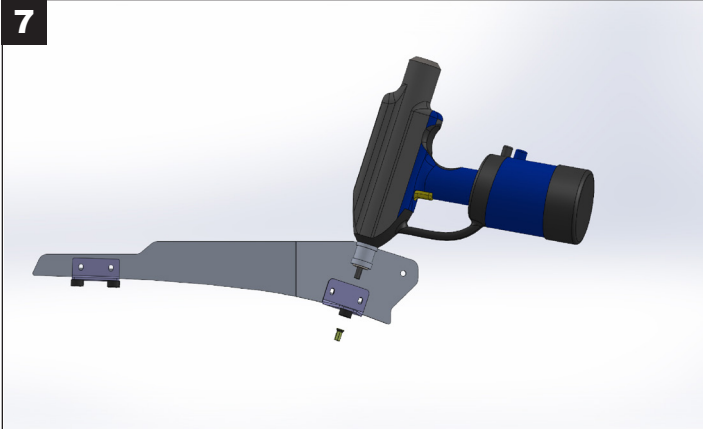
GO TO THE FRONT L BRACKET AND VERIFY THAT IT IS POSITIONED CORRECTLY IN THE DRIP RAIL. WITH A MARKER, GO AHEAD AND MARK THE HOLE. (THIS HOLE WILL BE CENTERED IN THE GUTTER AREA, 1-7/8" BACK FROM THE TOP EDGE OF THE WINDSHIELD GLASS). ONCE MARKED, GO AHEAD AND USE A SELF CENTERING PUNCH. (DRIVER SIDE AS SHOWN)

6



START WITH A PILOT HOLE UNTIL YOU WORK YOUR WAY UP TO A "Q"/.332" SIZE DRILL BIT. BE SURE TO USE A DRILL STOP AND DO NOT OVERDRILL THE HOLE. USE THE RIVNUT AS A GUIDE TO REMOVE THE SEALANT, ENSURING THE SPACER MAKES CONTACT WITH THE SHEET METAL ROOF. APPLY SEALANT AND INSTALL THE RIVNUT.

7



WITH THE FRONT RIVNUT INSTALLED, GO AHEAD AND REPEAT STEPS 3 & 4. BE SURE TO APPLY SEALANT TO THE BOTTOM SIDE OF THE SPACER AS THIS IS YOUR FINAL INSTALL. REPEAT ON PASSENGER SIDE. ADJUST BOTH SIDE PLATES TO BE ROUGHLY 3/8" TO 1/2" ABOVE THE TRUCK BODY.

8



GO AHEAD AND INSTALL THE 8 LIGHT GRAVITY BAR. ENSURE THAT THE BUMPSTOP IS ADEQUATELY PRELOADED. DO A FINAL TORQUE DOWN OF ALL HARDWARE. *IF YOU PLACE THE ADJUSTABLE BUMPSTOP PAD ON THE GLASS INSTEAD OF THE ROOF, YOU WILL NEED TO MOVE THE BUMPSTOP ONE LIGHT TO THE PASSENGER SIDE TO AVOID THE WIPERS*